

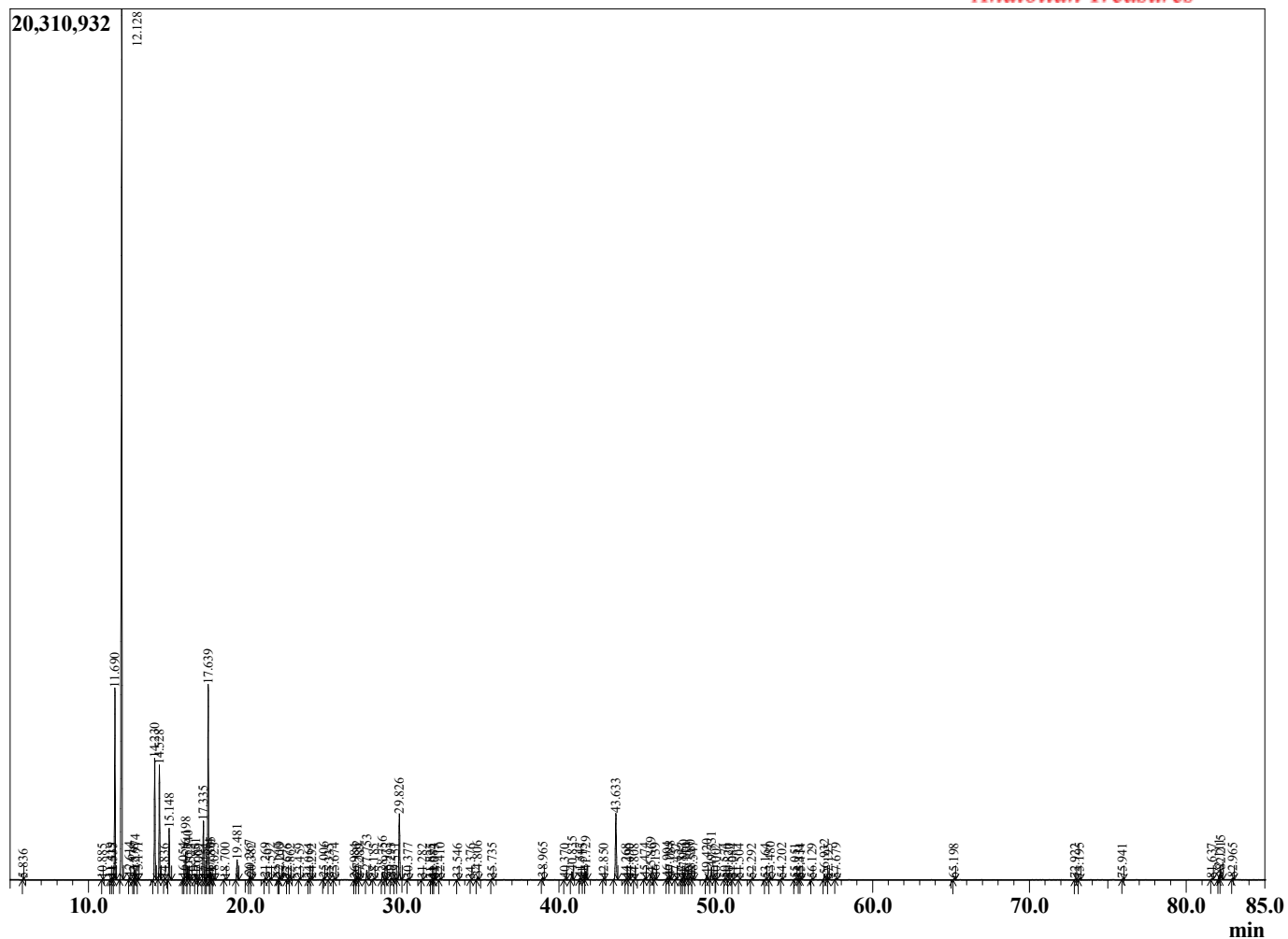
Sample Information

Sample Type : Essential Oil  
 Sample Name : Boswellia carterii  
 Injection : 0.10  
 Volume :

Frankincense Carterii Premium  
 Lot# SOK9-KK  
 Country: Somalia



Chromatogram Boswellia carterii



R.Time	Name	Area%
5.836	Toluene	0.03
10.885	2,6-Dimethyl-2-octene	0.01
11.419	Hashishene	0.05
11.535	Tricyclene	0.07
11.690	alpha-Thujene	8.03
12.128	alpha-Pinene	43.94
12.614	Thuja-2,4(10)diene isomer	0.11
12.878	alpha-Fenchene	0.02
12.974	Camphene	0.42
13.171	Thuja-2,4(10)-diene	0.09
14.230	Sabinene	5.48
14.528	beta-Pinene	5.16
14.836	Camphene	0.02
15.148	Myrcene	2.37
16.054	Pseudolimonene	0.07
16.198	alpha-Phellandrene	1.36
16.340	delta-3-Carene	0.65
16.523	Hexyl acetate	0.02
16.851	alpha-Terpinene	0.28
17.009	ortho-Cymene	0.02
17.335	para-Cymene	2.91
17.454	Unidentified	0.05
17.639	Limonene	9.65
17.734	beta-Phellandrene	0.22
17.805	1,8-Cineole	0.36
18.023	cis-beta-Ocimene	0.08
18.700	trans-beta-Ocimene	0.05
19.481	gamma-Terpinene	1.02
20.267	1-Octanol	0.20
20.382	Pinol	0.08
21.269	Terpinolene	0.09
21.592	para-Cymenene	0.08
22.160	Unidentified	0.02
22.219	Linalool	0.13
22.676	Unidentified	0.02
22.862	Thujol	0.02
23.459	beta-Thujone	0.05
24.064	alpha-Campholenal	0.05
24.232	Unidentified	0.02
25.006	trans-Pinocarveol	0.09
25.335	trans-Verbenol	0.03
25.674	alpha-Phellandrene-8-ol	0.08
26.984	Unidentified	0.03
27.132	para-Mentha-1,5-dien-8-ol	0.19
27.289	Unidentified	0.03
27.753	Terpinen-4-ol	0.52
28.185	para-Cymen-8-ol	0.04
28.756	alpha-Terpineol	0.48
28.972	Estragole	0.07
29.293	alpha-Phellandrene epoxide	0.08
29.551	Verbenone	0.08
29.826	Octyl acetate	3.74
30.377	trans-Carveol	0.06
31.282	cis-Carveol	0.03
31.825	Unidentified	0.00
31.984	Cuminaldehyde	0.02

R.Time	Name	Area%
32.073	Carvone	0.04
32.410	Carvotanacetone	0.07
33.546	3,5-Dimethoxytoluene	0.02
34.376	Phellandral	0.01
34.806	Bornyl acetate	0.16
35.735	Carvacrol	0.06
38.965	alpha-Cubebene	0.14
40.370	Cyclosativene	0.04
40.835	alpha-Copaene	0.50
41.347	beta-Bourbonene	0.08
41.515	Hexyl hexanoate	0.03
41.729	beta-Elemene	0.50
42.850	alpha-Gurjunene	0.04
43.633	beta-Caryophyllene	4.23
44.268	beta-Copaene	0.02
44.490	trans-alpha-Bergamotene	0.04
44.808	Unidentified	0.02
45.474	trans-Murrola-3,5-diene	0.08
45.869	alpha-Humulene	0.41
46.139	Alloaromodendrene	0.10
46.904	cis-Murrola-4(14),5-diene	0.14
47.088	trans-Cadina-1(6),4-diene	0.18
47.457	Germacrene D	0.04
47.837	delta-Selinene	0.06
47.950	beta-Selinene	0.28
48.110	gamma-Amorphene	0.12
48.380	alpha-Selinene	0.25
48.547	alpha-Murolene	0.13
49.420	gamma-Cadinene	0.29
49.731	delta-Cadinene	0.75
50.002	Unidentified	0.02
50.574	trans-Cadina-1,4-diene	0.05
50.820	alpha-Cadinene	0.03
51.084	alpha-Calacorene	0.03
51.504	alpha-Elemol	0.02
52.292	Unidentified	0.04
53.164	Spathulenol	0.03
53.480	Caryophyllene oxide	0.13
54.202	Viridiflorol	0.06
55.051	Unidentified	0.06
55.331	10-epi-gamma-Eudesmol	0.06
55.414	1,10-di-epi-Cubenol	0.04
56.129	1-Epicubenol	0.05
56.932	epi-alpha-Cadinol	0.38
57.195	delta-Cadinol	0.01
57.679	Unidentified	0.07
65.198	Phellandrene analogue	0.05
72.922	meta-Camphorene	0.03
73.195	Neocembrene	0.08
75.941	Unidentified	0.02
81.637	Cembrenol	0.05
82.111	Incensole	0.32
82.215	Serratol	0.62
82.965	Incensyl acetate	0.10
		100.00